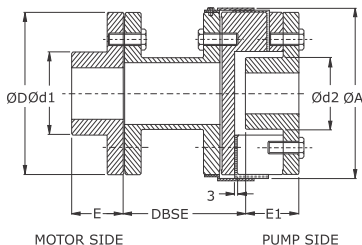
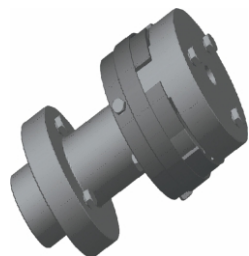




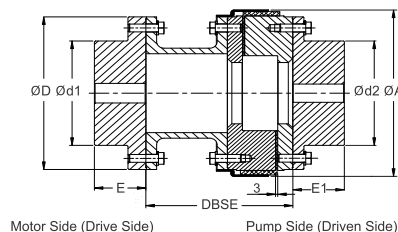
UTL FLEXIBLE COUPLINGS

**Utkarsh**  
FLEXIBLE COUPLINGS  
Revolutionizing Rotation

**UTL USWS TYPE A / B COUPLINGS**  
(T Cushion with Spacer)



USWS TYPE A



USWS TYPE B

**FEATURES**

- Rigid construction yet flexible
- Design made for ease in maintenance yet accommodating shaft constraints
- No down time or lost production, No metal to metal contact, Lubrication free, Long life
- For non standard DBSE please contact UTL
- For Large bore size is for (motor side / drive side hub), For Small bore size is for (pump side / driven side hub)
- USWS-B coupling is suitable where distance between shaft ends (DBSE) is large. Spacer member is radially removable without disturbing shaft alignment.
- Flexible rubber element can be inspection / replaced without disturbing the hubs.
- Maximum permissible misalignment: angular 1°, parallel 0.4 mm & axial 3 mm (initial alignment must be 25 % of maximum)

**DIMENSIONS & TECHNICAL DATA (TYPE A)**

Size	Power Rating at				Dimensions are in mm											Weight in Kg approx	Moment of inertia (kg.m <sup>2</sup> )
	Synthetic Rubber		Polyurethane		Motor side bore		Pump side bore		DBSE	ØA	ØD	Ød1	Ød2	E	E1		
	Rated Torque Nm	kW @ 100 rpm	Rated Torque Nm	kW @ 100 rpm	Min. Bore	Max. Bore	Min. Bore	Max. Bore									
276	534	5.6	802	8.4	25	75	24	42	140,180 200,250, 300,350	173	154	130	70	60	60	On request UTL will provide data.	On request UTL will provide data. According to spacer length.
280	783	8.2	1175	12.3	30	80	28	55		208	189	130	90	65	60		
295	1280	13.4	1920	20.1	30	95	28	65		253	234	160	106	80	70		
2955	2139	22.4	3209	33.6	30	105	28	70		253	234	160	106	80	75		
300	3046	31.9	4570	47.9	30	105	28	75		272	251	180	122	88	80		
350	4298	45.0	6446	67.5	30	115	30	80		323	302	200	130	90	90		

**DIMENSIONS & TECHNICAL DATA (TYPE B)**

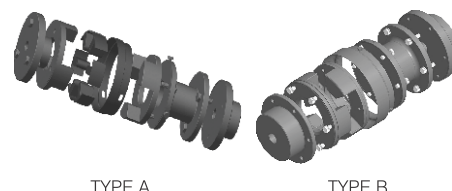
Size	Power Rating at				Dimensions are in mm										Weight in Kg approx	Moment of inertia (kg.m <sup>2</sup> )
	Synthetic Rubber		Motor side bore		Pump side bore		DBSE	ØA	ØD	Ød1	Ød2	E	E1			
	Rated Torque Nm	kW @ 100 rpm	Min. Bore	Max. Bore	Min. Bore	Max. Bore										
276	534	5.6	25	75	25	75	200 250 300 350	173	154	130	105	60	60	On request UTL will provide data.	On request UTL will provide data. According to spacer length.	
280	783	8.2	30	80	30	80		208	189	130	130	60	60			
295	1280	13.4	30	95	30	95		253	234	160	160	70	70			
2955	2139	22.4	30	105	30	105		253	234	160	160	75	75			
300	3046	31.9	30	105	30	105		272	251	180	180	80	80			
350	4298	45.0	30	115	30	115		323	302	200	200	90	90			



• For non standard DBSE please contact UTL

**MATERIAL SPECIFICATIONS**

Spacer (Type A)	Size - 276-350	SG Iron/ASTM A 536	SG	DIN 1693 GGG 40
Spacer (Type B)	Size - 276-350	Carbon Steel/ASTM A 105	CS	ASTM A 105
Hub	Size - 276-350	Cast Iron	CI	DIN 1693 GG 25
Adaptor	Size - 276-350	Cast Iron	CI	DIN 1693 GG 25
T Cushion 80° Shore A	All Size	Synthetic Rubber	NBR	ASTM D2000 BG 810
Outer ring	Size - 276-350	Mild. Steel	CRCA	BS 970
Hex Bolt	Size - 276-350	High Tensile	St	ISO 4014 : Gr 8.8



TYPE A

TYPE B

• Alternative T Cushion for higher power ratings is available on request.

T Cushion 92° Shore A	All Size	Synthetic Rubber	NBR	ASTM D2000 BG 910	Torque 1.6 times of standard
T Cushion 80° Shore A	All Size	Synthetic Rubber	EPDM	ASTM D2000 AA 810	Torque as per standard
T Cushion 92° Shore A (Yellow Colour)	All Size	Polyurethane	PU		Torque 1.8 times of standard
T Cushion 98° Shore A (Red Colour)	All Size	Polyurethane	PU		Torque 2.5 times of standard



• Max speed not to exceed surface speed V = 35m / sec

• For temperature range of elastomers please see on page no. 47 - coupling selection

www.utlcoupling.com